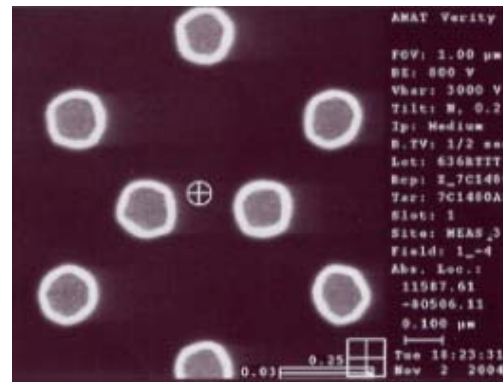
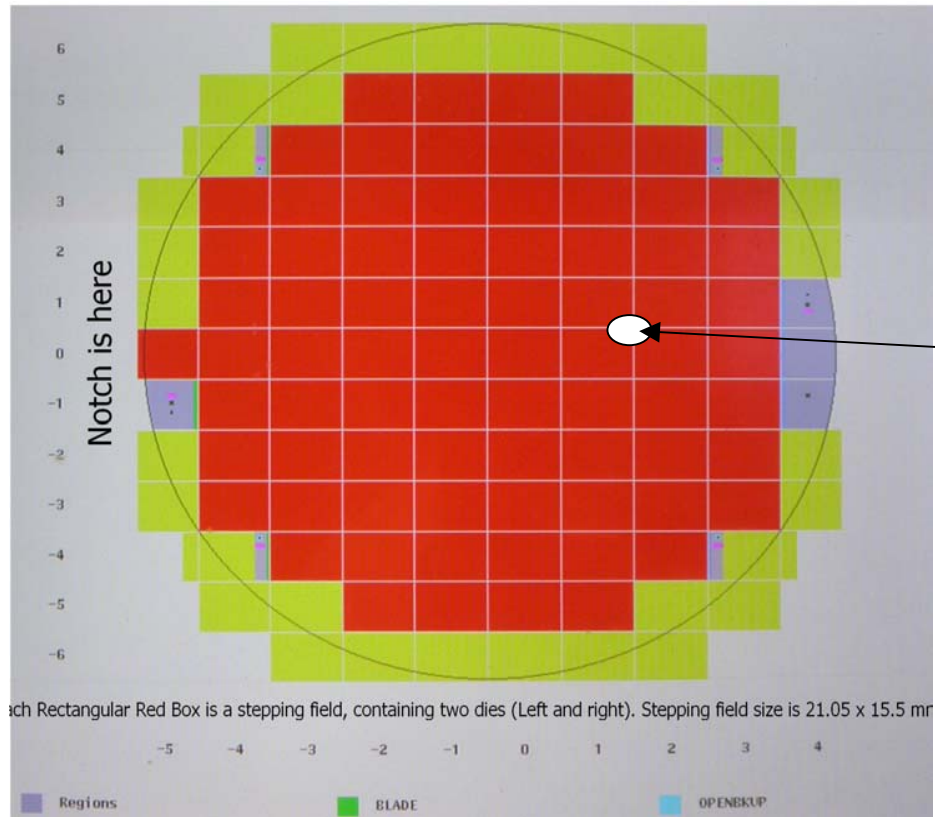

SKW5P (0.15um) W plug pattern wafer

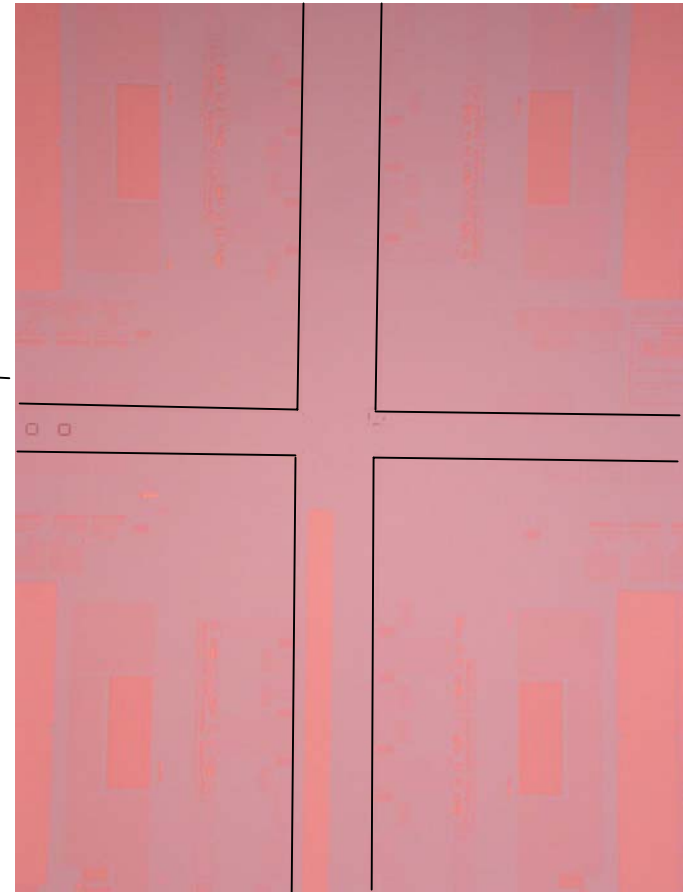


November 3, 2004
SKW Associates, Inc.

Wafer Map

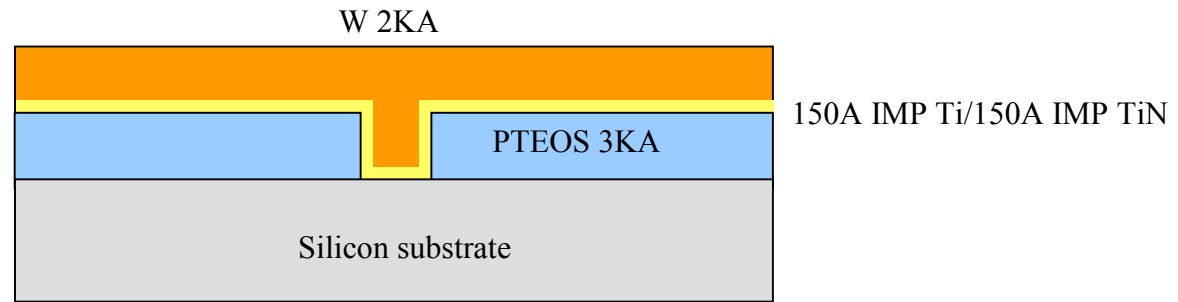


Notch is at 9:00 O'clock
Each Rectangular RED BOX is one stepping field.
Each stepping field contains Two Dies (Left and Right)
Each stepping field dimension is 21.05 X 15.5 mm

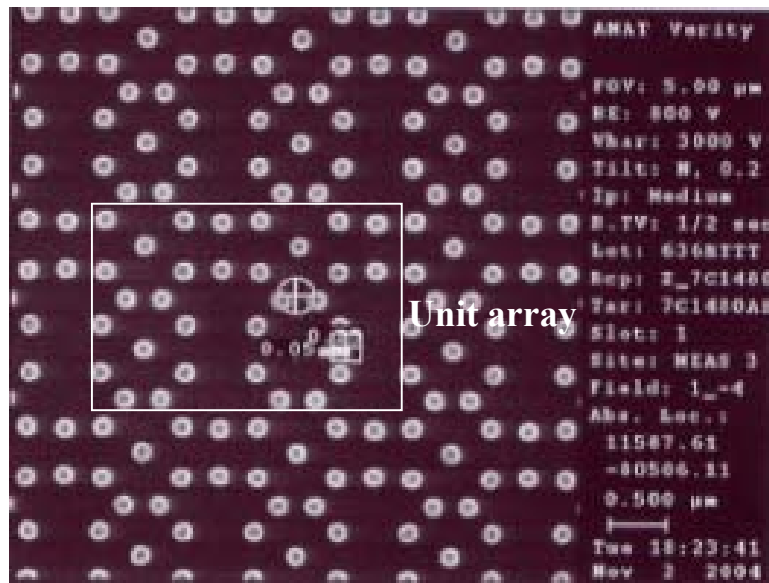


The Space between Left and Right Dies is 200um
The Space between Top and Bottom Dies is 100um

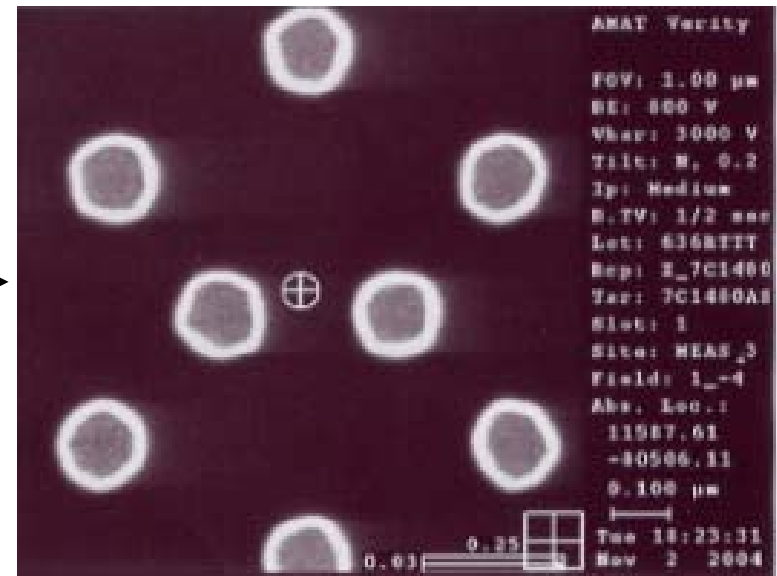
W plug arrays



Cross section



Pattern density = 12%



Contact diameter 150nm